

Logical Reasoning Sample Test Class-6

Total-Question:15

Time:15.0 Mins

PATTERN & MARKING SCHEME	
Section	(1) Logical Reasoning Sample Test Class-6
No. of Questions	15
Marks per Ques.	1

Logical Reasoning Sample Test Class-6

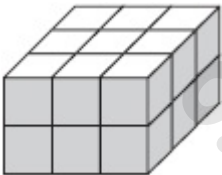
Q 1.

While going to his office P meets a man Q who is related to P, because P has R, a son, who is married to T. T is the daughter of Q. T has a daughter a. How is P related to A?

- A Grandfather
- B Grandmother
- C Uncle
- D Father-in-law

Q 2.

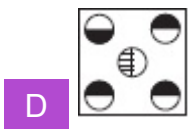
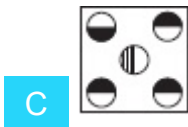
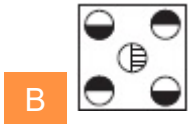
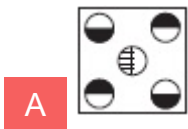
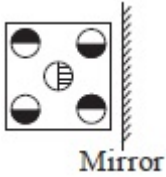
Count the number of unit cubes in the given solid.



- A 10
- B 15
- C 18
- D 22

Q 3.

Find the CORRECT mirror image of the given figure.



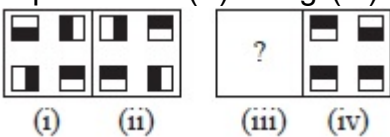
Q 4.

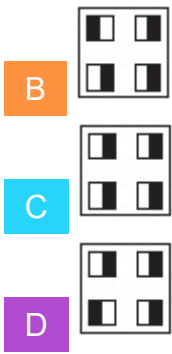
If the English alphabets are written in reverse order after interchanging alphabets from 'C to M' with those from 'P to Z' respectively, which letter would be midway between F and T in the new order?

- A Z
- B M
- C N
- D X

Q 5.

There is a definite relationship between figures(i) and (ii). Establish a similar relationship between figures (iii) and (iv) by selecting a suitable figure from the options which would replace the (?) in fig (iii).





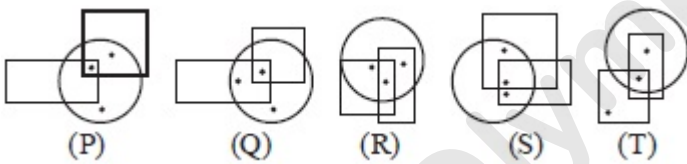
Q 6.

If in a certain code, O is written as P, A as B, M as N, S as T and so on, then how will COMPANIES be written in that code?

- A** DPNQBOJET
- B** DPOQBPIES
- C** DPNQBJOFT
- D** DPNQBOJFT

Q 7.

Select a pair of figures from the options which has the same condition of placement of dots.



- A** P, Q
- B** Q, R
- C** R, S
- D** S, T

Q 8.

A man walks northwards. After a while he turns towards his right and walks straight then he moved little further to his left. Finally, after walking a distance of one kilometre he turns to his left again. In which direction is he moving now?

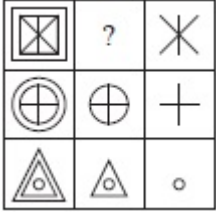
- A** North
- B** South

C East

D West

Q 9.

Which of the following figures will complete the given figure matrix?



A

B

C

D

Q 10.

A set of figures carrying certain characters is given. If the characters in each set follow a similar pattern, find the missing character.

15		18		21	
90	75	108	90	?	105

A 78

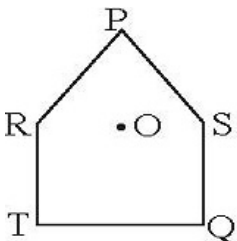
B 126

C 140

D 132

Q 11.

P, Q, R, S and T are five friends sitting around a pentagonal park facing O as shown below.



If P and T interchange their positions & Q and R interchange their positions, then which of the following is true?

- A** R is to the left of P.
- B** Q is second to the right of R.
- C** T is second to the left of P.
- D** S is to the right of T.

Q 12.

Arrange the following words in the sequence in which they occur in the dictionary.

1. Select
2. Seldom
3. Send
4. Selfish
5. Seller

- A** 1, 2, 4, 5, 3
- B** 2, 1, 5, 4, 3
- C** 2, 1, 4, 5, 3
- D** 2, 5, 4, 1, 3

Q 13.

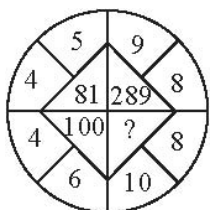
Using the below table, identify the correct expression.

P	Q	R	S
+	-	+	x

- A** $17 Q 8 S 9 P 18 R 2 = 46$
- B** $18 S 30 R 6 Q 5 P 0 = 85$
- C** $27 Q 10 R 5 S 4 P 3 = -32$
- D** All of these

Q 14.

Find the missing character in the given pattern.



- A** 164
- B** 324
- C** 224
- D** 364

Q 15.

If F = 6 and LAMB = 7, then HOTEL = _____.

- A** 72
- B** 60
- C** 12
- D** 18

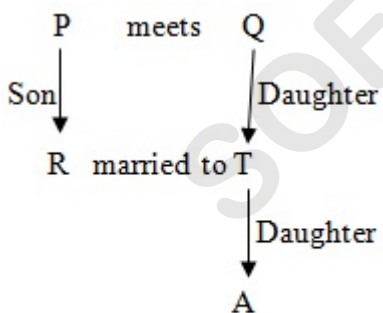
Answers

Logical Reasoning Sample Test Class-6

1.A 2.C 3.A 4.A 5.C 6.D 7.C 8.D 9.D 10.B 11.C 12.C 13.B 14.B 15.B

Solutions:

S 1.

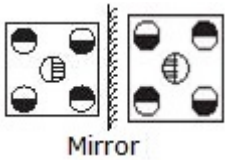


Answer- A Grandfather

S 2.

Each level has 9 cubes and there are two levels. Total is 18
 Answer - (C) - 18

S 3.



In the first column, the circles' unshaded parts face each other. So in the image, this column will be farthest from the mirror. The middle circle's shaded part will face the mirror in the image. The last two circles' shaded parts face each other and are near the mirror.
Answer- (A)

S 4.

AB CDEFGHIJKLM NO PQRSTUVWXYZ
A B PQRSTUVWXYZ NO CDEFGHIJKLM ←
↑ ↑

Answer- (A) Z

S 5.

(i) → (ii)- In the 1st column, small squares have moved anticlockwise.
In the 2nd column, the upper square has moved clock wise and the lower has moved.
To get (iii) from (iv) the opposite has to be done.

Answer - (C)

S 6.

Code is O is written as P, A as b, S as T. Which means each letter is written as the next one of the 26 alphabet.

So, C O M P A N I E S D P N Q B O J F T

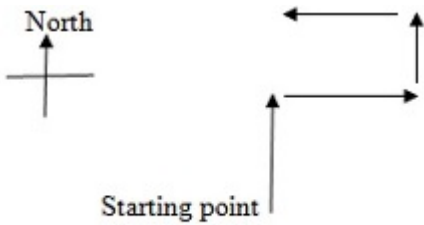
Answer - (D) DPNQBOJFT

S 7.

One dot is common to the circle and the square. Another dot is common to the circle and the rectangle. And the last dot is common to the square and the rectangle.

Answer - (C) R, S

S 8.



Answer - (D) West

S 9.

As we move horizontally the outer shape is removed. So as we move to the second place in the first row, the outermost square is removed.

Answer - (C)

S 10.

In the first figure, $15 \times 6 = 90$ and $15 \times 5 = 75$

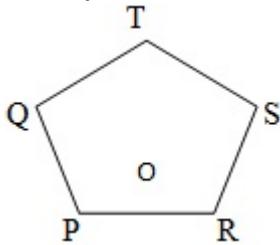
In the second figure, $18 \times 6 = 108$ and $18 \times 5 = 90$

So, in the third figure, $21 \times 6 = 126$ and $21 \times 5 = 105$

Answer - (B) 126

S 11.

New positions.



Answer- (C) T is second to the left of P.

S 12.

Seldom, Select, Selfish, Seller and Send will be last.

Answer- (C) 2, 1, 4, 5, 3

S 13.

A. $17 - 8 \times 9 + 18 \div 2 = 17 - 72 + 9 = -46$

B. $18 \times \frac{30}{6} - 5 + 0 = 18 \times 5 - 5 = 90 - 5 = 85$

C. $27 - \frac{10}{5} \times 4 + 3 = 27 - 2 \times 4 + 3 = 27 - 8 + 3 = 22$

Answer-(B) 18 S 30 R 6 Q 5 P 0 = 85

S 14.

Add the outer 2 numbers and square the sum.

$$5 + 4 = 9 \text{ and square of } 9 = 81$$

$$4 + 6 = 10 \text{ and square of } 10 = 100$$

$$9 + 8 = 17 \text{ and square of } 17 = 289$$

$$8 + 10 = 18 \text{ and square of } 18 = 324$$

Answer-(B) 324

S 15.

F is the 6th letter of the alphabets.

$$\text{LAMB} = 12 + 1 + 13 + 2 = 28$$

$$\text{HOTEL} = 8 + 15 + 20 + 5 + 12 = 60$$

Answer-(B) 60

SOF Olympiad Trainer